

EPOCHFIELD

NEXT GENERATION UTILITY
FIELD MAPPING



TO LEARN MORE OR SCHEDULE A DEMO PLEASE CONTACT US TODAY

PHONE: 720.458.3006

FAX: 720.458.3075

EMAIL: INFO@EPOCHSG.COM

WEBSITE: WWW.EPOCHSG.COM

ADDRESS:

1526 COLE BLVD. SUITE 240

LAKWOOD, CO 80401

epoch
Solutions Group Inc

EPOCHFIELD

EpochField emphasizes delivering this information to your crews in a powerful, cost-effective way. Through EpochField's synchronization capabilities, network asset data is seamlessly integrated to provide a fully disconnected or connected field mapping solution. EpochField provides its users with a scalable mobile mapping solution built on cutting-edge technology and supporting the latest generation of touch screen devices. With support for Windows, iOS and Android devices, no longer are you limited by which device you use.

APPLICATIONS

EpochField applications are focused, user-friendly vertical slices of functionality built as extensions to our core product. Damage Assessment, Asset Inspections, Vegetation Management, Work Order Management, and all your location-aware business processes can be built into EpochField thereby leveraging its core functionality.

All of our applications have the same look and feel to provide a consistent user experience across the entire EpochField platform. With the ability to work in a network disconnected mode, no longer will you be restricted in rural areas. The EpochField Platform and its application framework will be the de facto solution for streamlining your organization field workflows.



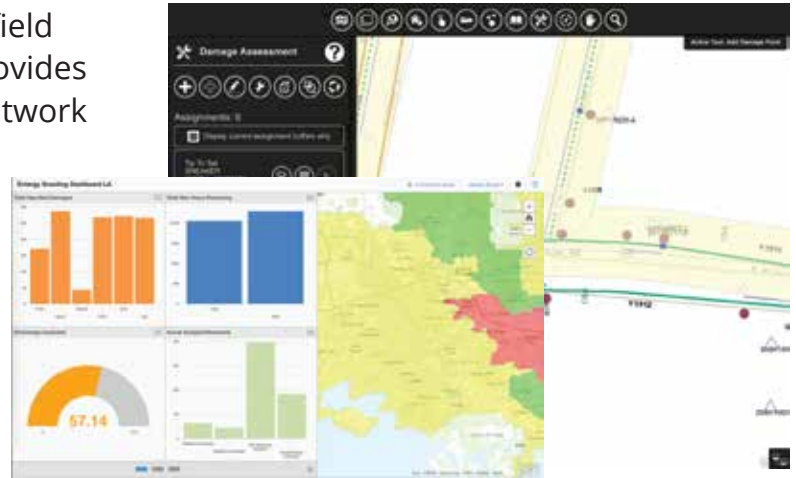
FIELD OPERATIONS FOR ELECTRIC, GAS AND WATER UTILITIES ARE CRITICAL FOR THE DAY-TO-DAY MANAGEMENT OF THEIR ESSENTIAL NETWORKS. PROVIDING FIELD CREWS WITH TIMELY INFORMATION ABOUT A NETWORK AND ITS ASSETS IS VITAL TO DOING BUSINESS WITHIN TODAY'S MODERN UTILITY.

KEY FEATURES AND BENEFITS

- Combines mobile mapping and field automation processes to increase field crew efficiency.
- Supported on Windows 7/8, Android & iOS.
- Significantly reduces the time to locate, inspect and service field assets.
- Employs fast tile based rendering of your data in a full multi-touch environment.
- Seamlessly integrates with data hosted on premise or in the cloud.
- Fully scalable architecture which supports thousands of users.
- Supports offline data collection and synchronization with back office.
- See ROI in months, not years by implementing only the tools your field crews need.
- Full integration with GPS streamlining location of assets on the map.

PLATFORM

EpochField works as a foundation for your field operations and workflows. The platform provides everything you need to get maps of your network to the field. With powerful asset search tools your field crews have all the information in hand to perform their day-to-day work. From this platform you will be able to expand your workflows with our powerful applications or additional plugins.



DAMAGE ASSESSMENT

EpochField Damage Assessment enables faster assessment and a better picture of resources needed to repair damage. Through this improved process, increases in efficiency and improvements in the System Average Interruption Duration Index (SAIDI) scores are achieved. EpochField Cloud is designed for use by mutual aid crews, who can download the app from the cloud and be up and running within minutes. Powerful operations dashboards aggregate and present the assessment data collected in the field to decision makers in near real time, thus allowing them to make much more informed and timely decisions versus traditional paper based workflows.

ASSET INSPECTION

EpochField Asset Inspection framework helps electric utilities streamline inspections of transmission/distribution structure and line assets. A configurable inspection workflow simplifies the entire process, ensures the required information is collected for each inspection, and eliminates common data entry errors. Asset pictures and videos can be attached to inspections, and a synchronization framework seamlessly moves that data back to an on premise database for subsequent reporting and analysis. A simple, user-friendly interface guarantees your inspectors will be up and running quickly.